

# RHS LEARNERS ARE

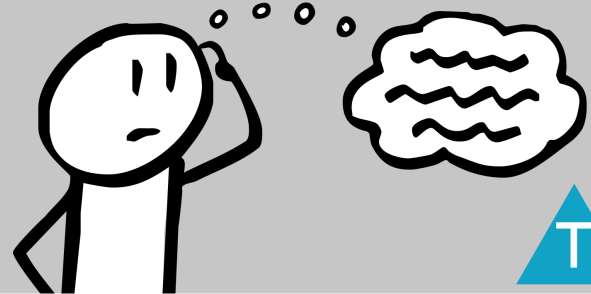
## RESILIENT

We have a growth mindset and accept that learning may involve set-backs and adversity. We are resourceful in the face of challenges and change. We approach uncertainty with determination. We are courageous and willing to be *risk-takers* and pursue new challenges.



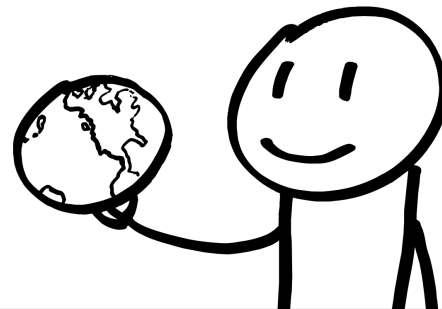
## THINKERS

We use critical and creative thinking skills to consider and analyze problems and formulate responses. We are *knowledgeable, open-minded* and curious *inquirers* and able to research and consider different points of view. We evaluate information to make thoughtful decisions. We are innovative and can generate and develop ideas to change, adapt or create new solutions or interpretations.



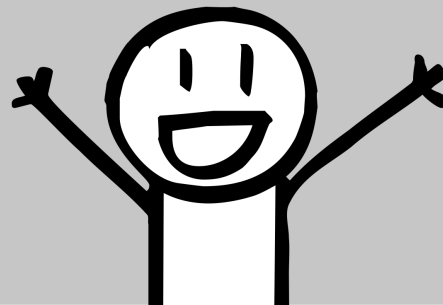
## RESPONSIBLE

We take responsibility for our choices, words and actions. We are *principled* and act with integrity and honesty. We have personal values and a sense of fairness and justice. We are members of local and global communities and have a widening sense of social and environmental responsibility.



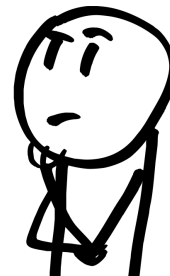
## CARING

As members of a diverse community, we demonstrate kindness, care and respect toward all others. We show empathy and compassion and respect the dignity and rights of all people. We strive to understand, welcome and include others.



## REFLECTIVE

We are self-aware and understand our personal strengths and areas for growth. We are able to regulate our emotions and behaviour and strive to be *balanced, healthy* people. We are able to think about our learning and create plans for improvement.



## COMMUNICATORS

We can collaborate, connect and engage with others to share and develop ideas. We listen actively to the perspectives of others. We are able to exchange information, experiences and ideas confidently. We can present information clearly and communicate effectively using a wide range of verbal, non-verbal and visual formats, including technologies.

